

REDKEN
5TH AVENUE NYC



INDULGE IN
RICH CHOCOLATE
COLOR ∞ ∞ ∞ 3 NEW SHADES

COVER FUSION
NATURAL
CHOCOLATES
FAMILY

WALL
CHART

COVER FUSION NEW! NATURAL CHOCOLATES

COOL AND BALANCED FOR BLONDES
AND BRUNETTES

Bring decadence to your brunettes and blondes with **Natural Chocolates**. This cool, yet rich neutral, complements any skin tone and is the perfect shade to use alone or added to your favorite formula for extra depth.



3 NEW SHADES

NCh = NATURAL CHOCOLATE



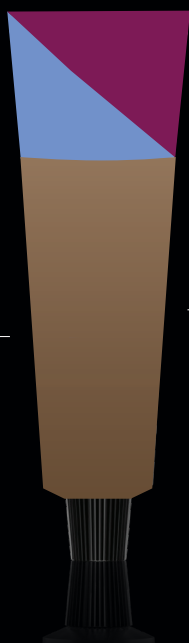
4NCh
Cover Fusion



6NCh
Cover Fusion



7NCh
Cover Fusion



NATURAL CHOCOLATES

ASH/BLUE

- Tones down brassy undertones
- Calibrated for each level's natural undertone

MAHOGANY

- Delicate red/violet tones are added for depth
- Adds richness without being overly warm

BROWN-TO-TAN BACKGROUND

- Adds balance for a natural-looking brunette or blonde

COLOR FUSION

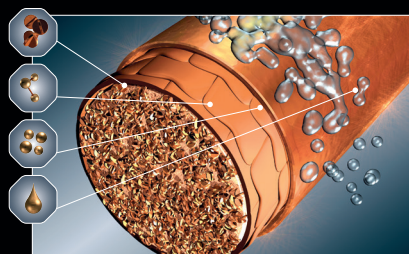
ADVANCED PERFORMANCE COLOR CREAM

- Natural-looking, multi-dimensional results with condition and shine
- Formulated with a 10-level modern system
- Use with Pro-oxide Cream Developer: 10, 20, 30 and 40 volume



COLORBOND TECHNOLOGY

Our haircolor system, with proprietary dyes, locks in color with intense conditioning and radiant shine while protecting vibrancy.



COVER FUSION™

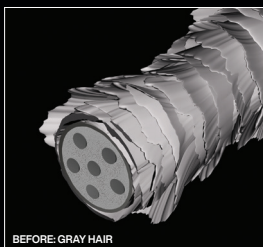
UP TO 100% COVERAGE. NATURAL DIMENSION. BUILT-IN TONE.

- Up to 100% dimensional gray coverage with natural, modern reflects
- Pre-blended shades for hair with 50% or more gray
- 10 tonal families with coverage and tone in one step
- Low ammonia formula
- Use with 20 volume Pro-oxide Cream Developer



REVITALAGE COLORBOND TECHNOLOGY

Exclusive to **Cover Fusion**, provides 100% coverage with higher saturation of color while providing superior hair conditioning.



BEFORE: GRAY HAIR



AFTER: HAIR COLORED WITH COVER FUSION

SHADE CATEGORIES AND TONAL FAMILIES

nb

NATURAL BALANCE

Formulated to produce "natural and balanced" results

nf

NATURAL FASHION

Create vibrant yet believable results, even on gray hair

f

FASHION

For ultra-vibrant results on natural haircolor

cf

COOL FASHION

For long-wear color with depth and a cool background

hf

HI-FUSION 2-IN-1 TONAL AMPLIFIER AND HIGHLIGHTER

Use as an amplifier to boost intensity or create vibrant highlights

cf

COVER FUSION

100% coverage, low ammonia color cream for superior, naturally reflective coverage on hair that is over 50% gray

el

COLOR FUSION EXTRA LIFT

Achieve up to 5 levels of lift with maximum control of warmth in a single process

PRE-SERVICE STEPS

PRE-SERVICE BEST PRACTICES

Before you begin any chemical service...

- Precisely follow package instructions for haircolor, lightener and texture products.
- Wear suitable gloves for all applications.
- Perform necessary patch tests as outlined in the directions.
- Utilize protective smocks or capes for you and your clients during the service.

SKIN ALLERGY TEST

PERFORM A SKIN ALLERGY TEST 48 HOURS BEFORE EACH USE OF HAIRCOLOR AS ALLERGIES CAN DEVELOP SUDDENLY, EVEN THOUGH YOUR CLIENT HAS PREVIOUSLY USED A HAIRCOLOR FROM THIS BRAND OR ANOTHER.

If your client has a tattoo, the risk of an allergic reaction may be increased.

SKIN ALLERGY TEST INSTRUCTIONS:

Use soap and water to clean an area the size of a quarter in the bend of your client's elbow. Pat dry. Using a plastic utensil, mix the following ratios of color in a plastic or glass container, then tightly recap the hair colorant and developer. Do not use metal utensils.

Mix 1/2 oz. of color and 1/2 oz. 20 vol. of the dedicated developer.

1. Apply Mixture to the test area with a cotton swab or ball.
2. Let test spot dry. Instruct client not to wash, cover or disturb for 48 hours.

Instruct client to examine test area periodically over the next 48 hours.

If he/she experiences any reactions such as redness, burning, itching, swelling, skin abrasions, eruptions or irritation in or around the test area, **DO NOT COLOR YOUR CLIENT'S HAIR UNTIL THEY HAVE CONSULTED A DOCTOR.**

STRAND TEST

Color Gels Oils may be readily accepted by porous hair that has been chemically treated or damaged from environmental exposure or heat styling. Always conduct a preliminary strand test to determine how the hair will accept color. Apply **Color Gels Oils** to a small section of hair and process according to instructions; adjust the formula accordingly.

ADDITIONAL REDKEN PRODUCTS

Redken offers advanced in-salon treatments plus a complete collection of haircare and styling products to enhance your talents:



ACIDIC BONDING CONCENTRATE

Customized in-salon services help you treat and transform every client's hair —while increasing your revenue.



STYLING

Innovative collection creates any look from runway volume to flexible texture and finished it with hold and shine.

HAIRCARE

Scientifically advanced, benefit-driven products deliver smart solutions to hair's specific needs.

REDKEN HAIRCOLOR COLLECTION



COLOR FUSION

Natural-looking, multi-dimensional results with condition and shine.

COLOR GELS LACQUERS

Rich, saturated results with exceptional gray coverage.

COLOR GELS LACQUERS 10 MINUTE

Liquid permanent color with 10-minute processing time and up to 100% gray coverage.

COLOR GELS OILS

Liquid permanent ammonia free color with up to 100% gray coverage & hair rejuvenation.



REDKEN BREWS COLOR CAMO

5-minute custom gray camouflage.



SHADES EQ GLOSS AND SHADES EQ BONDER INSIDE

The haircolor that thinks it's a conditioner



BLONDING

The professional solution to all of your blonding needs.

COLOR FUSION

ADVANCED PERFORMANCE COLOR CREAM



LEVEL OF DEPOSIT	BLACK-TO-GRAY BACKGROUND COLOR					BROWN-TO-TAN BACKGROUND COLOR										NO BACKGROUND COLOR							
	COOL FASHION		NATURAL BALANCE			NATURAL FASHION			NATURAL FASHION				FASHION			FASHION		VIOLET	TITANIUM				
	ASH ash	VIOLET ash	ASH green	ASH blue	ASH violet	NEUTRAL	GOLD beige	GOLD gold	GOLD orange	GOLD copper	GOLD red	BROWN copper	BROWN red	MOCHA red	MAHOGANY violet	COPPER	COPPER red	COPPER copper	RED	RED red	RED violet	VIOLET red	TITANIUM
12** HIGH LIFT																							
10 LIGHTEST BLONDE				12Ab	12Av	12N																	
9 VERY LIGHT BLONDE				10Ab		10N	10Gb																
8 LIGHT BLONDE	9Av				9Av	9N	9Gb				8Gr											8Rv	8T
7 MEDIUM BLONDE	7Aa	8Va	8Ag	8Ab	7Av	7N	7Gb	7Gg	7Go	7Gc	7Bc					7Cr	7Cc	7R					
6 DARK BLONDE			6Ag	6Ab		6N	6Gb	6Gg			6Bc			6Mr	6Mv	6C	6Cr	6R	6Rv	6Rv	6Rv	6Rv	6T
5 LIGHTEST BROWN		5Va	5Ag			5N	5Gb	5Gg	5Go	5Gr	5Bc	5Br				5Cr	5Cc	5R			5Rv	5Rv	5T
4 LIGHT BROWN			4Ag	4Ab		4N	4Gb				4Bc	4Br	4Mr	4Mv	4C		4R	4Rv			4Rv	4Rv	
3 MEDIUM BROWN						3N	3Gb														3Rv	3Rv	
2 DARK BROWN						2N																	
1 BLACK				1Ab																			

TECHNOLOGY KEY

Shade contains C-LOCK Technology

Shade contains R5 red dye

Shade contains Rubilane® copper dye

Shade contains Carmin R red dye

COLOR FUSION EXTRA LIFT



NO BACKGROUND COLOR			
COLOR FUSION EXTRA LIFT			
VIOLET	LIGHT NEUTRAL	BLUE	TITANIUM
EL-V Bases 7-10 Shown on Level 7	EL-LN Bases 6-10 Shown on Level 6	EL-B Bases 5-7 Shown on Level 6	EL-T Bases 3-5 Shown on Level 5

COLOR FUSION COVER FUSION



BROWN-TO-TAN BACKGROUND COLOR										
COVER FUSION										
NATURAL ASH BROWN	NATURAL CHOCOLATE	NATURAL ASH	NATURAL NATURAL	NATURAL GOLD beige	NATURAL GOLD (RUBINANE)	NATURAL GOLD	NATURAL GOLD copper	NATURAL BROWN copper	NATURAL COPPER red	NATURAL BROWN red
			9NA	9NB	9NG	9NG		8NGc		
		8NA	8NB							
		7NA	7NB	7NG	7NG				7NC	
6NAb	6NC	6NA	6NB				6NGc	6NBc		6NB
		5NA	5NB							
		4NA	4NB						4NC	
			3N							
2NAb		2NA								

MIXING AND PROCESSING

	MIXING RATIO (COLOR: DEVELOPER)	PRO-OXIDE DEVELOPER	LEVELS OF LIFT	USAGE	MINUTES	SPECIAL INSTRUCTIONS
COLOR FUSION	Mix 1:1	10 volume	Up to 1	Minimal lift	35-45 minutes	<ul style="list-style-type: none"> For modern, multi-dimensional gray coverage, formulate with the N or Gb families For superior gray coverage on 50% or more gray hair, formulate with Cover Fusion Do not use heat
		20 volume	Up to 2	Standard lift/gray coverage		
		30 volume	Up to 3	Additional lift		
		40 volume	3+	Maximum lift		
HI-FUSION AS AN AMPLIFIER	Mix 1:1	10 volume	Varies according to formulation	Tonal amplifier for on or off-scalp	35-45 minutes	<ul style="list-style-type: none"> To help maintain the proper balance of Hi-Fusion and Color Fusion dyes: ¼ oz. Hi-Fusion + 1¼ oz. Color Fusion Color tone and longevity may be compromised otherwise Do not use heat
		20 volume				
		30 volume				
		40 volume				
HI-FUSION AS A HIGHLIGHTER	Mix 1:1	10 volume	Varies according to formulation	Tonal highlighter for off-scalp only	35-45 minutes	<ul style="list-style-type: none"> Hi-Fusion is not recommended to be used alone for all-over color applications For on-scalp applications, refer to Hi-Fusion amplifier instructions Do not use heat
		20 volume				
		30 volume				
		40 volume				
COLOR FUSION EXTRA LIFT	Mix 1:2	Violet, Light Neutral and Blue: 40 volume		Up to 5	35-45 minutes	<ul style="list-style-type: none"> Color Fusion Extra Lift shades are only intermixable with each other Violet is for starting levels 7-10 Light Neutral is for starting Levels 6-10 Blue is for starting Levels 5-7 Titanium is for starting Levels 3-5 Do not use heat
		Titanium: 30 or 40 volume				
COVER FUSION	Mix 1:1	20 volume	Up to 2	50-100% gray coverage	35 minutes (up to 45 for resistant hair)	<ul style="list-style-type: none"> Use only with 20 vol. Pro-oxide Cream Developer Do not use heat

UNDERSTANDING THE LABEL

EXAMPLE:



BACKGROUND COLOR AND TONE

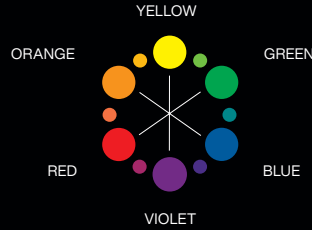
Background color is the portion of the color base that helps produce balanced, natural-looking results and gives the shade its foundation. Tone is the portion of the base that gives a shade its unique character.

THE COLOR WHEEL

Always consider the tone of the hair that you are starting with. Use the color wheel to counteract or enhance tones. To counteract tones, select a shade with an opposite tonal value. Remember, opposites neutralize. To enhance tones, select a shade with a similar tonal value.

AMERICAN LEVEL SYSTEM

LEVEL	TO NE	UNDERTONE	CORRECTIVE
10	Lightest Blonde	Pale Yellow	Violet
9	Very Light Blonde	Yellow	Violet
8	Light Blonde	Yellow/Orange	Violet/Blue
7	Medium Blonde	Orange/Yellow	Blue/Violet
6	Dark Blonde	Orange	Blue
5	Lightest Brown	Red/Orange	Blue Green
4	Light Brown	Red	Green
3	Medium Brown	Red/Violet	Yellow Green
2	Dark Brown	Violet	
1	Black	Blue	



COLOR FUSION LEVEL SYSTEM

The hair's natural hair color level is the starting point in formulation. Color Fusion is based on an American 10-level system, which means there are more increments of lighter brown shades between Levels 2 and 6, allowing for more color formulation options at Levels 3, 4 and 5.



FORMULATION GUIDELINES

- Determine your client's natural hair color level using the **Color Fusion** natural level finder tool found in the swatch book. Remember to consider percentage of gray (use the gray percentage finder found in the swatch book), hair texture, condition and hair density.
- Determine the target color (final level and tone) desired by your client.
- Determine the undertone found at the target level (see Level System Chart).
- Select the **Color Fusion** shade to enhance, balance or counteract undertones and volume of developer needed to achieve the target color.

WITH COVER FUSION

- Natural Level:** 4 Light Brown/75% Gray
- Target Color:** Level 6 Dark Blonde with natural, cool tones
- Undertone at Level 6:** Orange
- Formula:** 2 oz. 6NA **Color Fusion** + 2 oz. 20 vol. **Pro-oxide** Cream Developer

GUIDELINES FOR COVERING GRAY HAIR

To cover gray means to minimize the contrast between natural hair and gray hair. To maintain the most control when covering gray, select a formula no more than two levels lighter than the natural hair.

% OF GRAY	COLOR FUSION		COVER FUSION
	N OR GB	PROPORTION OF OTHER SHADES	PURE SHADE
UP TO 25%	½ oz.	1½ oz.	Not recommended
25-50%	1 oz.	1 oz.	
50-75%	1½ oz.	½ oz.	2 oz.
75-100%	1¾ oz.	¼ oz.	2 oz.

FORMULATION EXAMPLE FOR LIFTING NATURAL PIGMENT:

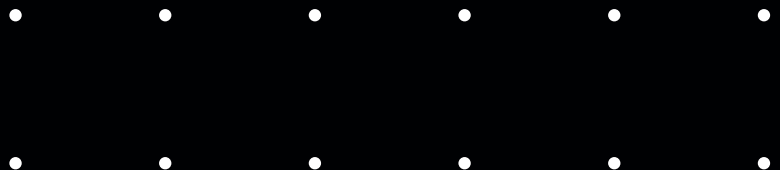
- Natural Level: 4 Light Brown, 0% gray
- Target Color: Level 6 Bright, vibrant red
- Undertone at Level 6: Orange
- Formula: 2 oz. 6Rr **Color Fusion** + 2 oz. 20 vol. **Pro-oxide** Cream Developer

FOR COVERING GRAY: WITH COLOR FUSION

- Natural Level:** 4 Light Brown/25-50% Gray
- Target Color:** Level 6 Dark Blonde with soft golden tones
- Undertone at Level 6:** Orange
- Formula:** 2 oz. 6Gb **Color Fusion** + 2 oz. 20 vol. **Pro-oxide** Cream Developer

DEVELOPER

Pro-oxide Cream Developer (10, 20, 30 and 40 volume) is the appropriate developer to use with **Color Fusion**. It has a smooth consistency for easy mixing and provides predictable performance for all types of applications.



THE REDKEN COLOR MANTRA

SHOW OFF YOUR PROFESSIONAL SKILLS. CREATE PHENOMENAL HAIRCOLOR.

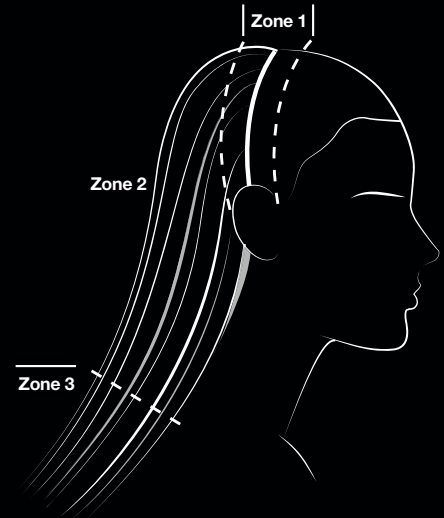
APPLY IN ZONES. MAXIMIZE COLOR RESULTS. MINIMIZE STRESS ON HAIR.

Redken uses the term "Zones" to refer to different areas of the hair strand. Understanding Zones will help you achieve phenomenal, even color results every time!

ZONE 1: Regrowth or root area, approximately the first ½ inch of hair

ZONE 2: Mid-shaft area, begins where Zone 1 ends

ZONE 3: Overly porous hair that extends past the shoulders (not all hair has a Zone 3)



WE APPLY COLOR IN ZONES BASED ON pH SCIENCE BECAUSE:

Each Zone accepts color differently based on the condition of the hair

We care for the integrity of even the most sensitized parts of the hair

The combination of alkaline and acidic color maximizes color results and minimizes stress on hair

Alkaline color should only touch virgin hair. Use any alkaline color formula on Zone 1. Always use acidic **Shades EQ** color on Zones 2 and 3 for amazing condition and shine while maintaining maximum respect for previously-colored hair.

ON-SCALP

For all on-scalp applications, start with dry hair and divide into 4 sections. Take ¼" (0.5 cm) partings for even saturation. Process according to Mixing and Processing chart. Rinse, shampoo and condition with **Color Extend Magnetics**.

HAIRCOLOR APPLICATION BEST PRACTICES

1. Pre-treat the hair with **ABC Treatments** and **Hair Cleansing Cream**. Dry hair.
2. Apply color generously to Zone 1 (the scalp area) using fine ¼" diagonal partings.
3. Use the opposite diagonal to cross-check and ensure proper application.
4. Use a timer to ensure accurate timing. Do not over or under process.
5. Always refresh with **Shades EQ**.

MODERN VIRGIN APPLICATION EXAMPLE USING COLOR FUSION:

Zone 1 Formula: 6N **Color Fusion** + 20 vol. **Pro-oxide** Cream Developer

Zone 2 Formula: 7Gb **Color Fusion** + 20 vol. **Pro-oxide** Cream Developer


1. Apply selected formula to Zone 1 (the scalp area).
2. Immediately apply to Zone 2 (the mid-shaft) the slightly lighter and warmer formula.
3. Begin processing time after the Zone 2 application is complete.
4. Process at room temperature for 35 minutes.
5. Rinse and shampoo with **Hair Cleansing Cream**, **Extreme** or **Color Extend Magnetics**. Condition with **Extreme** or **Color Extend Magnetics**.

#REDKENNATURALCHOCOLATES



For more information: Redken.com

 Like us on Facebook
[Facebook.com/Redken](https://www.facebook.com/Redken)

 Follow us on Instagram
[@Redken](https://www.instagram.com/Redken)

 Follow us on Access
<https://www.lorealaccess.com>